



## Polo

The Polo system comes in polished aluminium or can be powdercoated. Its design allows for easy incorporation of a variety of cable management options.

### LEAD TIME

5-7 Weeks

### MATERIALS

Polished aluminium

### CERTIFICATIONS

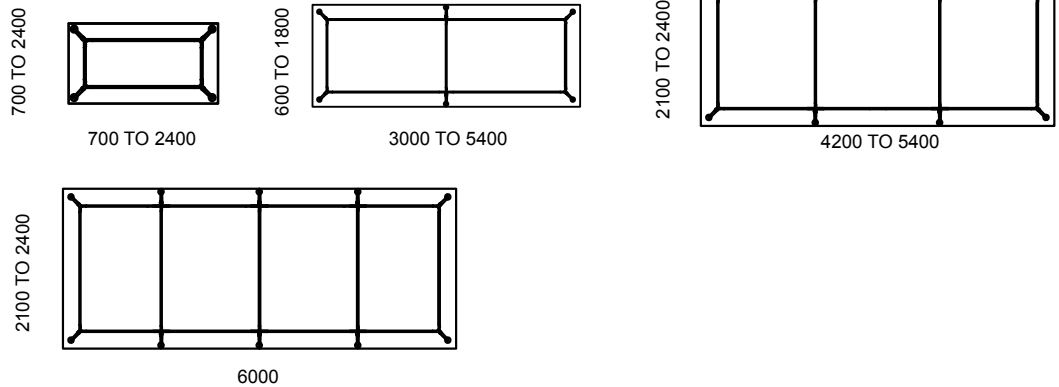
ISO 14001 Certified Factory

### WARRANTY

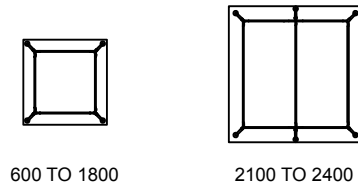
5 years

## Configurations

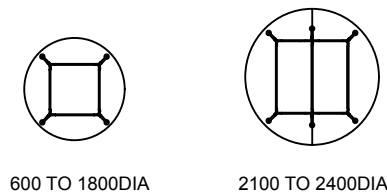
### Rectangle



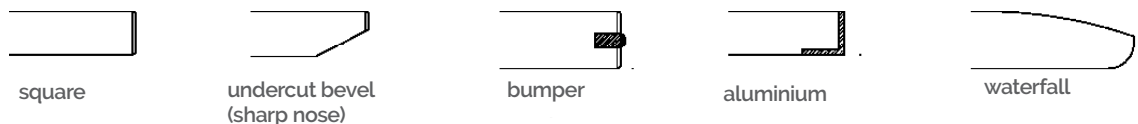
### Square



### Round



## Edge Detail Options



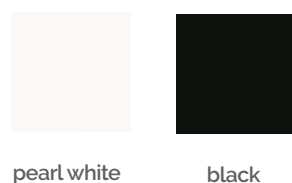
## Top Finish Options

### finishes



## Base Finish Options

### powdercoated colours



### Notes

1. Standard base is polished aluminium. We powdercoat to a variety of finishes.
2. Top colours are as per specifications of material supplier. This system adapts to any top finish.